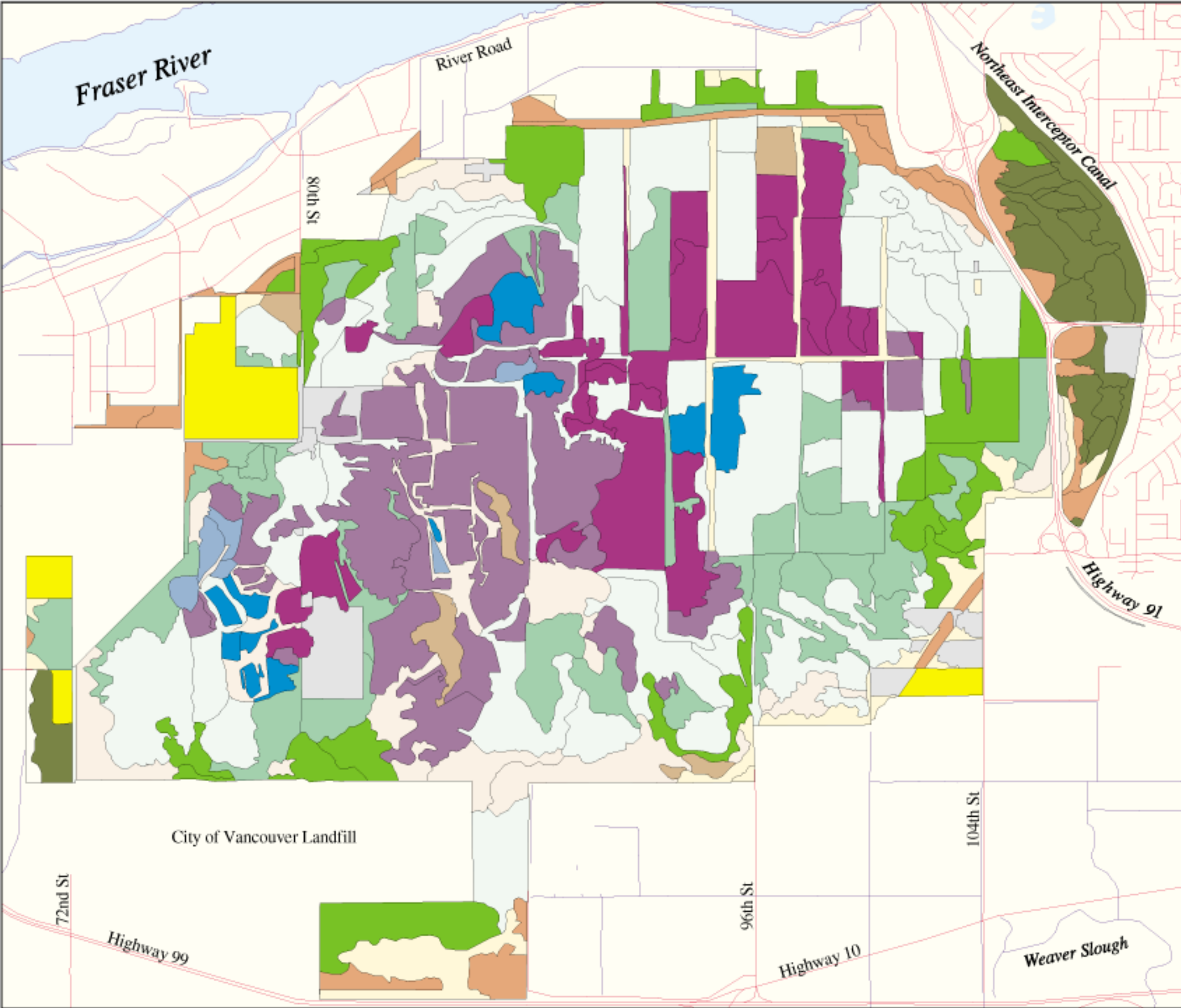


# Burns Bog Ecosystem Review



- Birch Forest  
BC, BS
- Pine-Salal Forest  
LG
- Pine-Sphagnum - Low Shrub  
LS3a, LS1b
- Pine-Sphagnum - Tall Shrub  
LS3b
- Pine-Sphagnum - Woodland  
LS4,5
- Mixed Conifer Forest  
RC, RF, RK
- Hardhack Thicket  
HH, CH
- White Beak-rush - Three-way Sedge  
RD
- White Beak-rush - Sphagnum  
RS
- Yellow Water Lily - Watershield  
WW
- Open Water  
OW
- Herbaceous Vegetation on  
Disturbed Peat  
BL, CS, JS, WC
- Cultivated Fields  
CF
- Disturbed Surface  
ES, OS, RP, RR

Figure 4.18  
Distribution of simplified vegetation types  
in Burns Bog. See Table 4.11 for code  
interpretation (adapted from Madrone  
Consultants Ltd. 1999).

